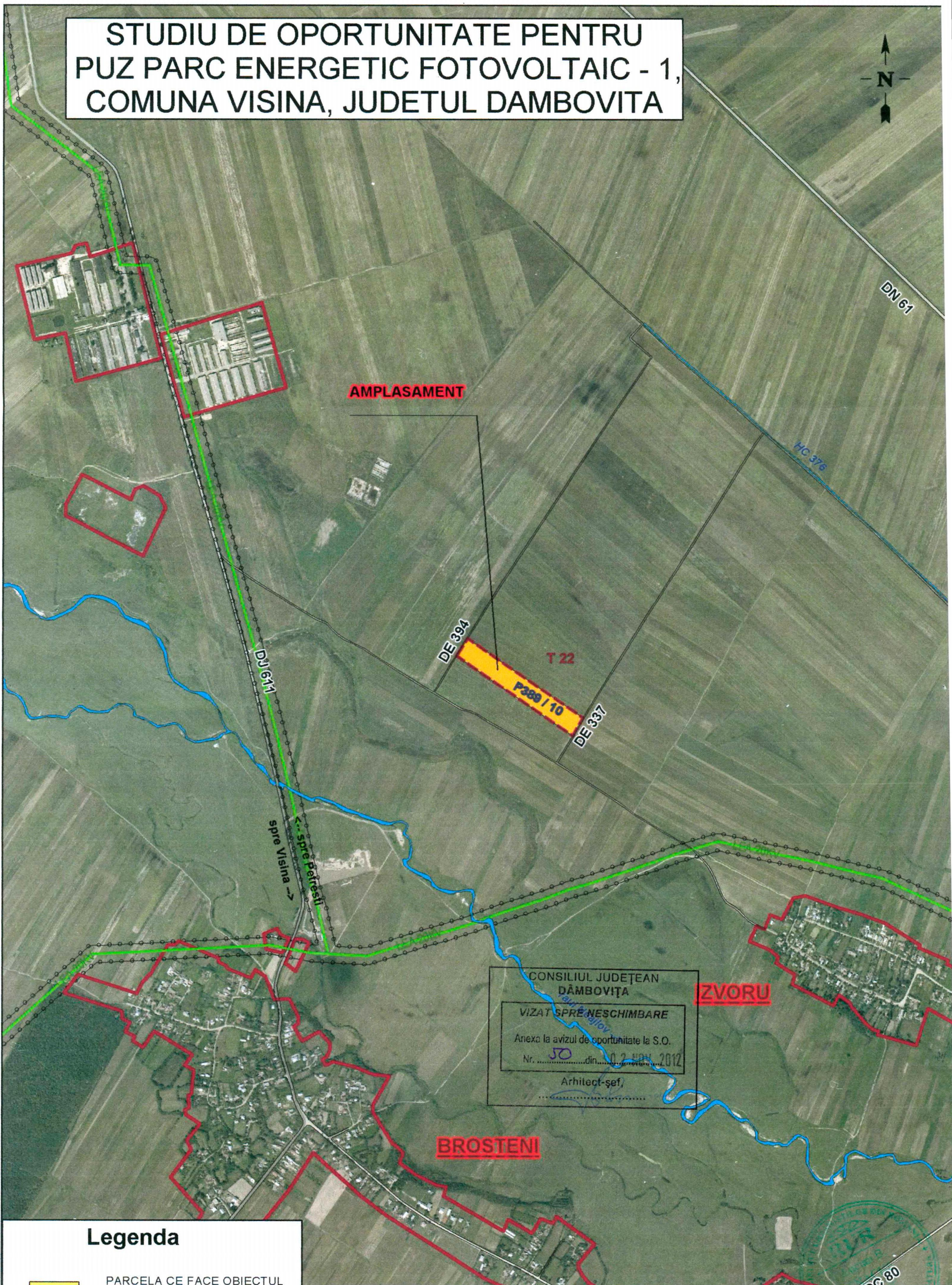



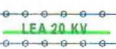



STUDIU DE OPORTUNITATE PENTRU PUZ PARC ENERGETIC FOTOVOLTAIC - 1, COMUNA VISINA, JUDETUL DAMBOVITA



CONSILIUL JUDEȚEAN
DĂMBOVIȚA
VIZAT SPRE NESCHIMBARE
Anexa la avizul de oportunitate la S.O.
Nr. 50 din 02.10.2012
Arhitect-șef,
.....

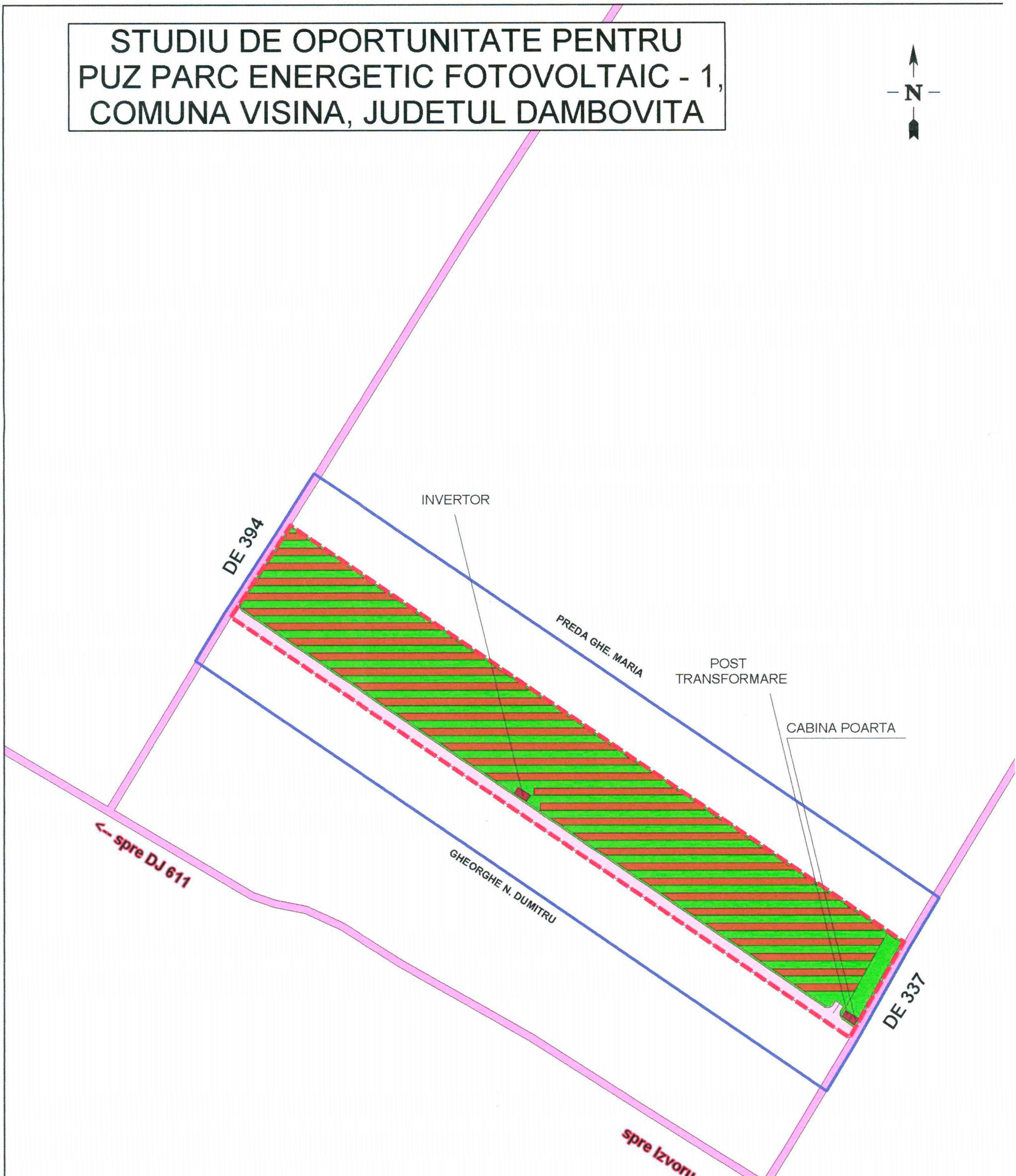
Legenda

-  PARCELA CE FACE OBIECTUL PUZ-ULUI
-  INTRAVILAN PROPUȘ
-  INTRAVILAN EXISTENT
-  LEA 20 KV
-  CURSURI DE APA

| | | | | |
|---|-------------------------|---|-------------------------|------------------|
| Proiectant general: BIA - ENACHE LUCIAN | | Denumire proiect: " Studiu de Oportunitate pentru PUZ parc energetic fotovoltaic - 1, comuna Visina, judetul Dambovita" | | Cod proiect: 237 |
| | | Beneficiar: S.C. SOLAR UNIQUE ENERGY PARTNERS SRL | | Faza: SO |
| Coordonator | arh. urb. Lucian Enache | Scara 1:10000 | Incastrare in teritoriu | Plansa 1 |
| Proiectat | arh. urb. Lucian Enache | | | |
| Desenat | ing. Bogdan Ticsa | Data Oct 2012 | | |



STUDIU DE OPORTUNITATE PENTRU PUZ PARC ENERGETIC FOTOVOLTAIC - 1, COMUNA VISINA, JUDEȚUL DAMBOVIȚA



CONSILIUL JUDEȚEAN
DÂMBOVIȚA

VIZAT SPRE NESCHIMBARE

Anexa la avizul de oportunitate la S.O.

Nr. 50 din 02 NOV. 2012

Arhitect-șef,



| LEGENDA | |
|---------|-----------------------|
| | LIMITA ZONEI STUDIATE |
| | INTRAVILAN PROPUȘ |
| | DRUM INCINTA |
| | DRUM DE EXPLOATARE |
| | CONSTRUCTII |
| | EDIFICABIL PROPUȘ |
| | SPATIU VERDE |

| | | | |
|---|-------------------------|--|--------------------------|
| Proiectant general: BIA - ENACHE LUCIAN | | Denumire proiect: "Studiu de Oportunitate pentru PUZ parc energetic fotovoltaic - 1, comuna Visina, judetul Dambovita" | Cod proiect: 23 |
| | | Beneficiar: S.C. SOLAR UNIQUE ENERGY PARTNERS SRL | Faza: SO |
| Coordonator | arh. urb. Lucian Enache | Scara 1:2000 | Reglementari Urbanistice |
| Proiectat | arh. urb. Lucian Enache | | |
| Desenat | ing. Bogdan Ticsa | | |
| | | Data Oct 2012 | Plansa 3 |